

Rapid decompression

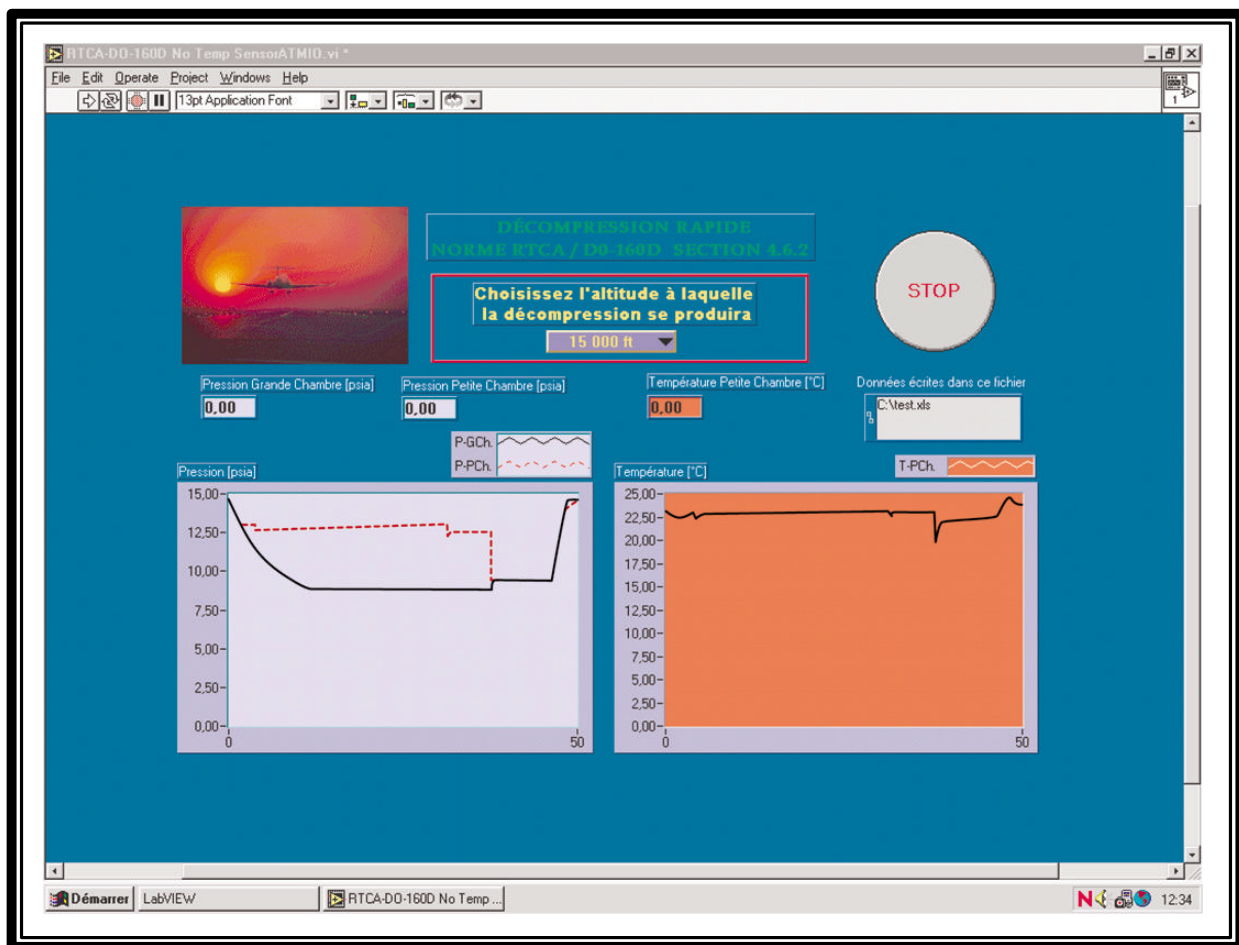
*Do you need to have a product tested in the development or prototype stage?
Do you need qualification or pre-certification tests done?
Our professionals are here to help!*

TYPES OF TESTS

- Rapid decompression
- Controlled temperature in altitude
- Overpressure

ACCORDING TO STANDARDS

- MIL-STD-810E
- RTCA/DO-160D
- GR-63-CORE
- IEC
- EN (European Standards)



CRIQ

CENTRE DE RECHERCHE
INDUSTRIELLE DU QUÉBEC

CAPACITY TABLE

Altitude		Pressure		
Metre	Feet	kPa	psia	torr
-2 000	-6 500	127,77	18,5	958
-1 000	-3 300	113,93	16,5	855
-60	-200	102,05	14,8	765
0	0	101,325	14,7	760
2 500	8 200	74,68	10,8	560
5 000	16 400	54,02	7,8	405
7 500	24 600	38,25	5,5	287
10 000	32 800	26,44	3,8	198
12 500	41 000	17,86	2,6	134
15 000	49 200	12,04	1,7	90
17 500	57 400	8,12	1,2	61
20 000	65 600	5,47	0,79	41
22 500	73 800	3,70	0,53	28
25 000	82 000	2,51	0,36	19
27 500	90 200	1,71	0,25	13
30 000	98 400	1,17	0,16	9



Altitude capacity



Rapid decompression capacity

AVAILABLE SERVICES

- Data acquisition system
- Airtight access to monitor / control the equipments under test
- Possible access to test site

INFORMATION

For more information, contact our customer service at :

(514) 383-3210 or 1 800 667-4570, ext. 3210

or visit our web site : www.criq.qc.ca

CRIQ is certified ISO 9001

8475, avenue Christophe-Colomb, Montréal (Québec) Canada H2M 2N9

(2000-05)