

SAGE/X⁴



Scanner for the wood flooring industry

SAGE/X⁴ adjusts perfectly to the realities of your industrial facility. It is stable over time, able to manage a variety of orders, a complex and varied product mix, and raw materials of varying grade and surface conditions. Its evolved and smart optimization algorithms will enable you to achieve previously unattainable performance results while satisfying even the strictest product specifications. The performance of its defect detection and optimization algorithms, coupled with high flexibility modeling of your processing operations will enable you to envision the complete automation of your operations.

RETURN ON INVESTMENT AND DIRECT BENEFITS

For a wood flooring facility, the return on investment is estimated at **between 9 and 12 months** thanks to:

- Major improvement in productivity;
- Gains of up to 15%* in material performance and value;
- Consistent classification.

* Based on performance prior to installation

CRIQ
INNOVATION PARTNER

SAGE/X⁴

Scanner for the wood flooring industry

TECHNICAL SPECIFICATIONS

Raw material characteristics

Species:	Hard maple, red maple, red oak, white oak, yellow/cherry birch, beech, ash, cherry, walnut, hickory, jatoba, tigerwood, sapele, capreuva
Widths:	From 1" to 10" (can be combined)
Thicknesses:	From 0.5" to 2"
Lengths:	From 18" to 20'

Characteristics and defects detected

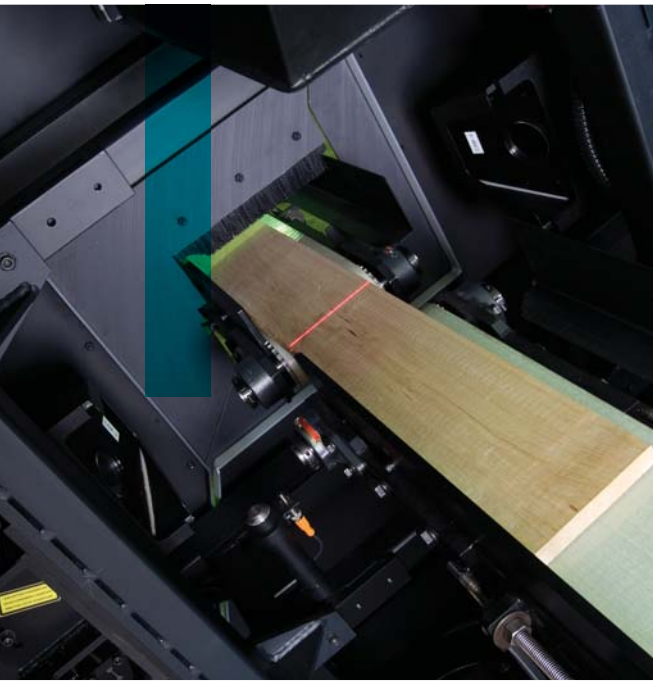
- Splits, checks, holes, shakes
- Hit and miss, thickness deviations
- Wane and specific wane depths
- Crook, cup, bow
- Tight, loose, dark, unsound, sound knots
- Bark pockets, mineral streaks
- Heart / sapwood
- Sticker stains, heat altered wood

Performance

Processing speed:	600 feet/min. (variable on demand)
--------------------------	------------------------------------

MAIN CHARACTERISTICS

- 2-side colour detection
- 4-side 3D profilometry detection
- 4-side laser luminance detection
- Cross-cutting optimization
- Choice-of-side optimization
- Moulding machine orientation optimization
- Compliance with constraints relating to length, quantity, proportion, etc.



CRIQ, 2017/09/19 - © All rights reserved

For advice or information about SAGE/X⁴:

François Gingras, Director
Productivity and Industrial Systems
418-659-1550 / 800-667-2386, ext. 2209
francois.gingras@criq.qc.ca

Guy Genest, Coordinator
Business Development
418-659-1550 / 800-667-2386, ext. 2879
guy.genest@criq.qc.ca